

TokorozawaSL Feb.2015 (41ft ver. 所沢SL#03EASY arenge



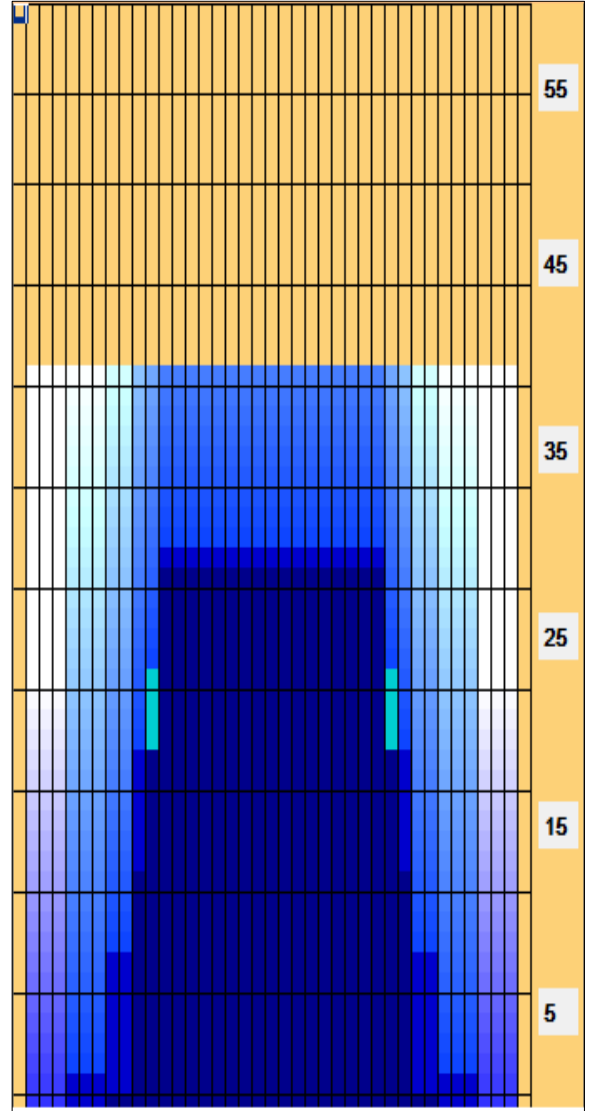
Oil Pattern Distance: 41 Feet **Reverse Brush Drop:** 38 Feet **Oil Per Board:** 50 uL
Forward Oil Total: 14.9 mL **Reverse Oil Total:** 13.2 mL **Volume Oil Total:** 28.1 mL
Forward Boards Crossed: 298 Boards **Reverse Boards Crossed:** 264 Boards **Total Boards Crossed:** 562 Boards

	Start	Stop	Loads	Speed	Crossed	Start	End	Feet	T.Oil
1	6L	6R	1	14	29	0.0	0.0	0.0	1450
2	8L	8R	3	14	75	0.0	5.9	5.9	3750
3	10L	10R	4	18	84	5.9	16.1	10.2	4200
4	11L	11R	4	18	76	16.1	26.3	10.2	3800
5	12L	12R	2	18	34	26.3	31.4	5.1	1700
6	2L	2R	0	18	0	31.4	35.0	3.6	0
7	2L	2R	0	26	0	35.0	41.0	6.0	0

	Start	Stop	Loads	Speed	Crossed	Start	End	Feet	T.Oil
1	2L	2R	0	30	0	41.0	32.0	-9.0	0
2	12L	12R	4	18	68	32.0	21.8	-10.2	3400
3	10L	10R	4	18	84	21.8	11.6	-10.2	4200
4	8L	8R	2	18	50	11.6	6.5	-5.1	2500
5	5L	5R	2	14	62	6.5	2.6	-3.9	3100
6	2L	2R	0	14	0	2.6	0.0	-2.6	0

Conditioner:
 Type In or Select
 One
 TransferType:
 Type In or Select
 One

- Forward
- Reverse
- Combined
- Buff



Item	3L-7L:18L-18R	8L-12L:18L-18R	13L-17L:18L-18R	18L-18R:17R-13R	18L-18R:12R-8R	18L-18R:7R-3R
Description	Outside Track:Middle	Middle Track:Middle	Inside Track:Middle	Middle:Inside Track	Middle:Middle Track	Middle:Outside Track
Track Zone Ratio	16.25	1.67	1	1	1.67	16.25

