

tokorozawaSL Dec. 2014 (43ft. ver. Main Street)



Oil Pattern Distance:	43 Feet	Reverse Brush Drop:	41 Feet	Oil Per Board:	50 uL
Forward Oil Total:	10.05 mL	Reverse Oil Total:	11.3 mL	Volume Oil Total:	21.35 mL
Forward Boards Crossed:	201 Boards	Reverse Boards Crossed:	226 Boards	Total Boards Crossed:	427 Boards

	Start	Stop	Loads	Speed	Crossed	Start	End	Feet	T.Oil
1	2L	2R	2	18	74	0.0	2.5	2.5	3700
2	8L	8R	1	18	25	2.5	5.0	2.5	1250
3	10L	10R	2	18	42	5.0	10.1	5.1	2100
4	13L	13R	4	18	60	10.1	20.3	10.2	3000
5	2L	2R	0	18	0	20.3	24.0	3.7	0
6	2L	2R	0	22	0	24.0	33.0	9.0	0
7	2L	2R	0	30	0	33.0	43.0	10.0	0

Conditioner:
Type In or Select One

TransferType:
Type In or Select One

Forward
Reverse
More

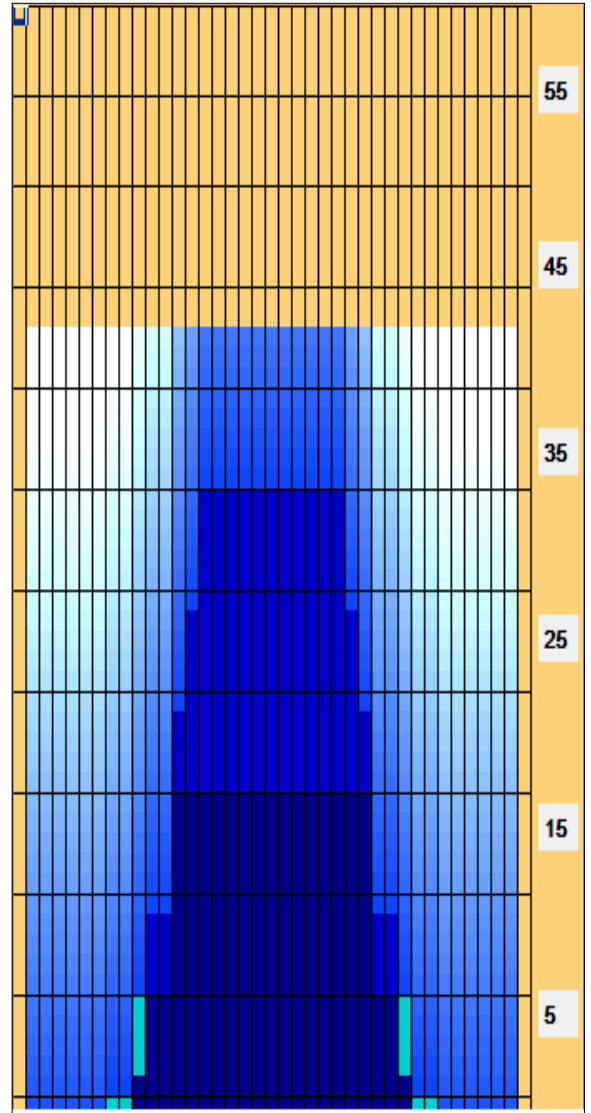
	Start	Stop	Loads	Speed	Crossed	Start	End	Feet	T.Oil
1	2L	2R	0	30	0	43.0	35.0	-8.0	0
2	15L	15R	2	22	22	35.0	28.8	-6.2	1100
3	14L	14R	2	18	26	28.8	23.7	-5.1	1300
4	13L	13R	4	18	60	23.7	13.5	-10.2	3000
5	11L	11R	4	14	76	13.5	5.6	-7.9	3800
6	10L	10R	2	10	42	5.6	2.8	-2.8	2100
7	2L	2R	0	10	0	2.8	0.0	-2.8	0

Forward
Reverse
More

Conditioner:
Type In or Select One

TransferType:
Type In or Select One

Forward
Reverse
Combined
Buff



MAIN STREET - 7241 This 41 foot pattern is typical of the many house shots used across the USA. Using a slight blend, the MAIN STREET is a pattern that enables many different styles to score while socializing and hanging out with friends.

Item	3L-7L:18L-18R	8L-12L:18L-18R	13L-17L:18L-18R	18L-18R:17R-13R	18L-18R:12R-8R	18L-18R:7R-3R
Description	Outside Track:Middle	Middle Track:Middle	Inside Track:Middle	Middle:Inside Track	Middle:Middle Track	Middle:Outside Track
Track Zone Ratio	11.5	3.29	1.06	1.06	3.29	11.5

