

2024年5.6月3階 7.8月1階 デイリーパターン



Oil Pattern Distance: 41 Feet **Reverse Brush Drop:** 33 Feet **Oil Per Board:** 50 uL
Forward Oil Total: 16.75 mL **Reverse Oil Total:** 8.75 mL **Volume Oil Total:** 25.5 mL
Forward Boards Crossed: 335 Boards **Reverse Boards Crossed:** 175 Boards **Total Boards Crossed:** 510 Boards

	Start	Stop	Loads	Speed	Crossed	Start	End	Feet	T.Oil
1	2L	2R	1	14	37	0.0	0.0	0.0	1850
2	4L	4R	1	14	33	0.0	1.9	1.9	1650
3	5L	5R	2	18	62	1.9	7.0	5.1	3100
4	6L	6R	1	22	29	7.0	10.1	3.1	1450
5	9L	9R	3	22	69	10.1	19.4	9.3	3450
6	10L	10R	3	26	63	19.4	30.4	11.0	3150
7	10L	10R	2	30	42	30.4	38.9	8.5	2100
8	2L	2R	0	30	0	38.9	41.0	2.1	0

Navigation: Forward Reverse More

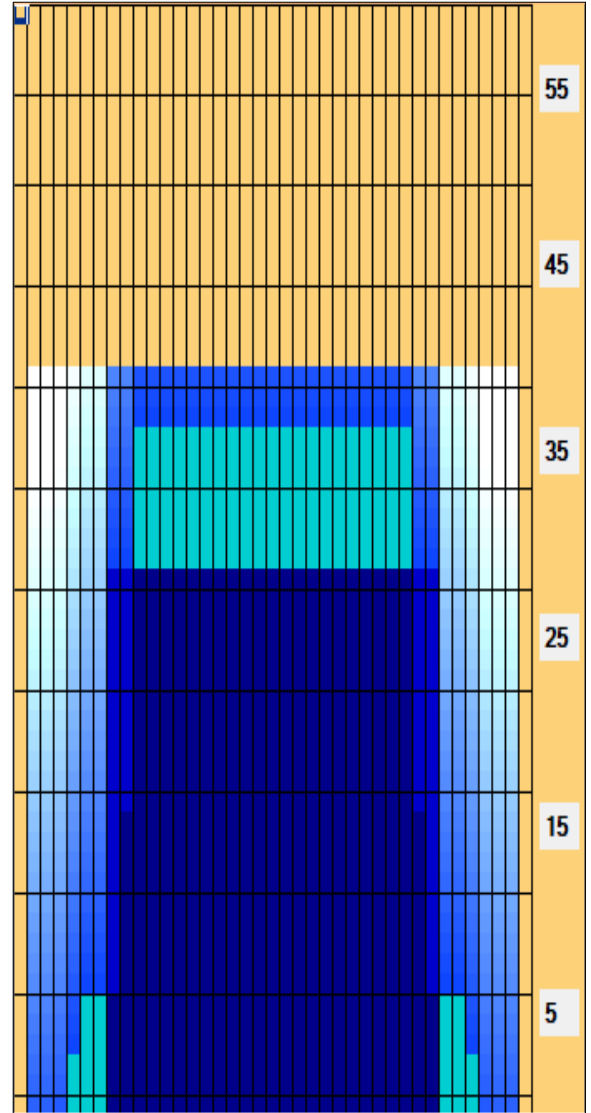
	Start	Stop	Loads	Speed	Crossed	Start	End	Feet	T.Oil
1	2L	2R	0	30	0	41.0	31.0	-10.0	0
2	8L	8R	3	30	75	31.0	18.3	-12.7	3750
3	8L	8R	2	26	50	18.3	11.0	-7.3	2500
4	8L	8R	2	18	50	11.0	5.9	-5.1	2500
5	2L	2R	0	14	0	5.9	0.0	-5.9	0

Navigation: Forward Reverse More

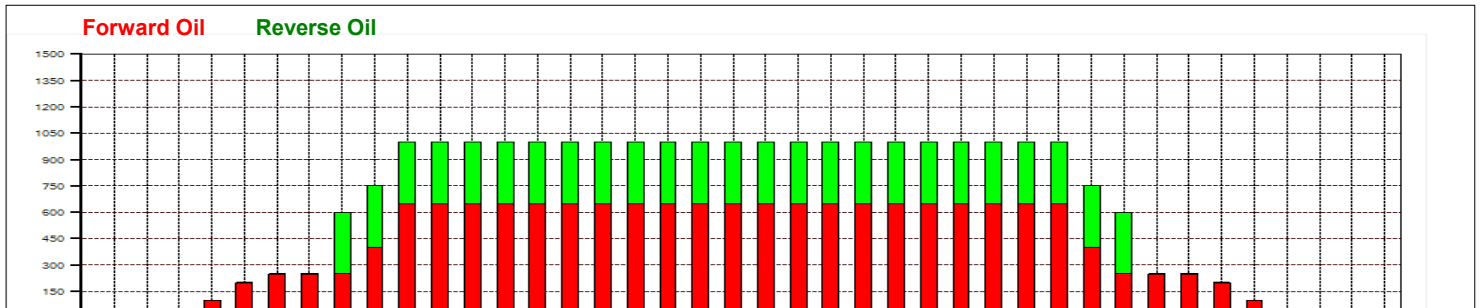
Conditioner:
Type In or Select One

TransferType:
Type In or Select One

- Forward
- Reverse
- Combined
- Buff



Item Description	3L-7L:18L-18R Outside Track:Middle	8L-12L:18L-18R Middle Track:Middle	13L-17L:18L-18R Inside Track:Middle	18L-18R:17R-13R Middle: Inside Track	18L-18R:12R-8R Middle:Middle Track	18L-18R:7R-3R Middle:Outside Track
Track Zone Ratio	5.88	1.15	1	1	1.15	5.88



2024年5.6月1階 7.8月3階 デイリーパターン



Oil Pattern Distance:	43 Feet	Reverse Brush Drop:	33 Feet	Oil Per Board:	50 uL
Forward Oil Total:	18.95 mL	Reverse Oil Total:	7 mL	Volume Oil Total:	25.95 mL
Forward Boards Crossed:	379 Boards	Reverse Boards Crossed:	140 Boards	Total Boards Crossed:	519 Boards

	Start	Stop	Loads	Speed	Crossed	Start	End	Feet	T.Oil
1	2L	2R	1	14	37	0.0	0.0	0.0	1850
2	4L	4R	3	18	99	0.0	7.6	7.6	4950
3	7L	7R	2	18	54	7.6	12.7	5.1	2700
4	8L	8R	2	18	50	12.7	17.8	5.1	2500
5	9L	9R	2	22	46	17.8	24.0	6.2	2300
6	10L	10R	2	22	42	24.0	30.2	6.2	2100
7	11L	11R	1	26	19	30.2	33.8	3.6	950
8	12L	12R	1	26	17	33.8	37.4	3.6	850
9	13L	13R	1	26	15	37.4	41.0	3.6	750
10	2L	2R	0	30	0	41.0	43.0	2.0	0

Navigation: Forward Reverse More

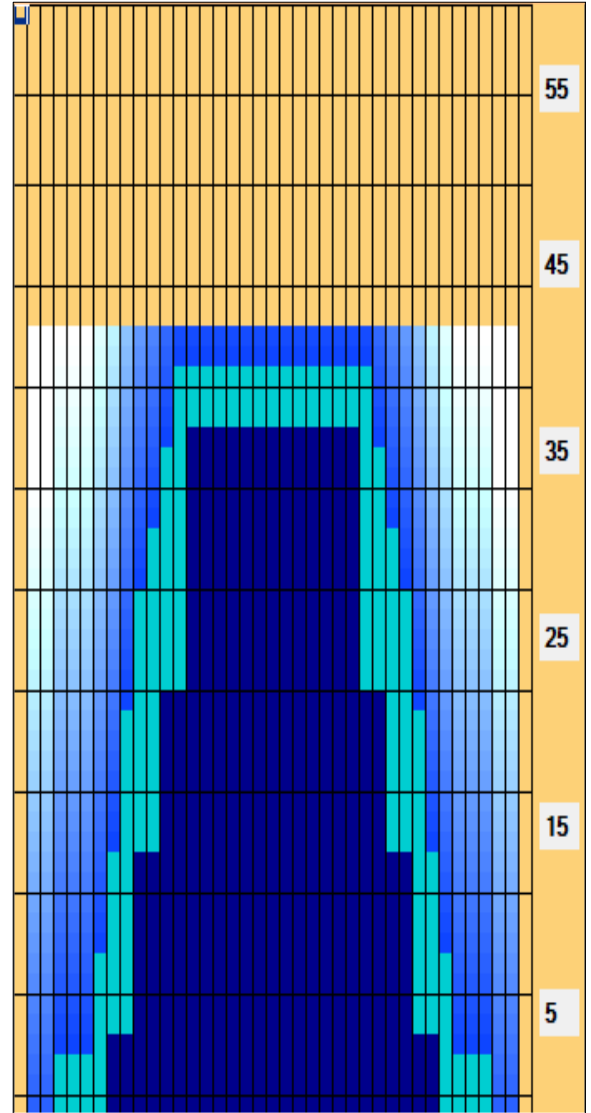
	Start	Stop	Loads	Speed	Crossed	Start	End	Feet	T.Oil
1	2L	2R	0	30	0	43.0	38.0	-5.0	0
2	14L	14R	3	30	39	38.0	25.3	-12.7	1950
3	12L	12R	2	30	34	25.3	16.8	-8.5	1700
4	10L	10R	2	30	42	16.8	8.3	-8.5	2100
5	8L	8R	1	14	25	8.3	6.4	-1.9	1250
6	2L	2R	0	14	0	6.4	0.0	-6.4	0

Navigation: Forward Reverse More

Conditioner:
Type In or Select One

TransferType:
Type In or Select One

- Forward
- Reverse
- Combined
- Buff



Item Description	3L-7L:18L-18R Outside Track:Middle	8L-12L:18L-18R Middle Track:Middle	13L-17L:18L-18R Inside Track:Middle	18L-18R:17R-13R Middle: Inside Track	18L-18R:12R-8R Middle:Middle Track	18L-18R:7R-3R Middle:Outside Track
Track Zone Ratio	6.05	1.64	1.03	1.03	1.64	6.05

