

2024年11月12月レーンコンディション 40 f



Oil Pattern Distance:	40 Feet	Reverse Brush Drop:	40 Feet	Oil Per Board:	40 uL
Forward Oil Total:	13.68 mL	Reverse Oil Total:	8.92 mL	Volume Oil Total:	22.6 mL
Forward Boards Crossed:	342 Boards	Reverse Boards Crossed:	223 Boards	Total Boards Crossed:	565 Boards

	Start	Stop	Loads	Speed	Crossed	Start	End	Feet	T.Oil
1	5L	5R	1	14	31	0.0	0.0	0.0	1240
2	6L	6R	1	14	29	0.0	1.9	1.9	1160
3	7L	7R	2	14	54	1.9	5.8	3.9	2160
4	8L	8R	3	18	75	5.8	13.4	7.6	3000
5	9L	9R	3	22	69	13.4	22.7	9.3	2760
6	10L	10R	4	22	84	22.7	35.1	12.4	3360
7	2L	2R	0	30	0	35.1	40.0	4.9	0

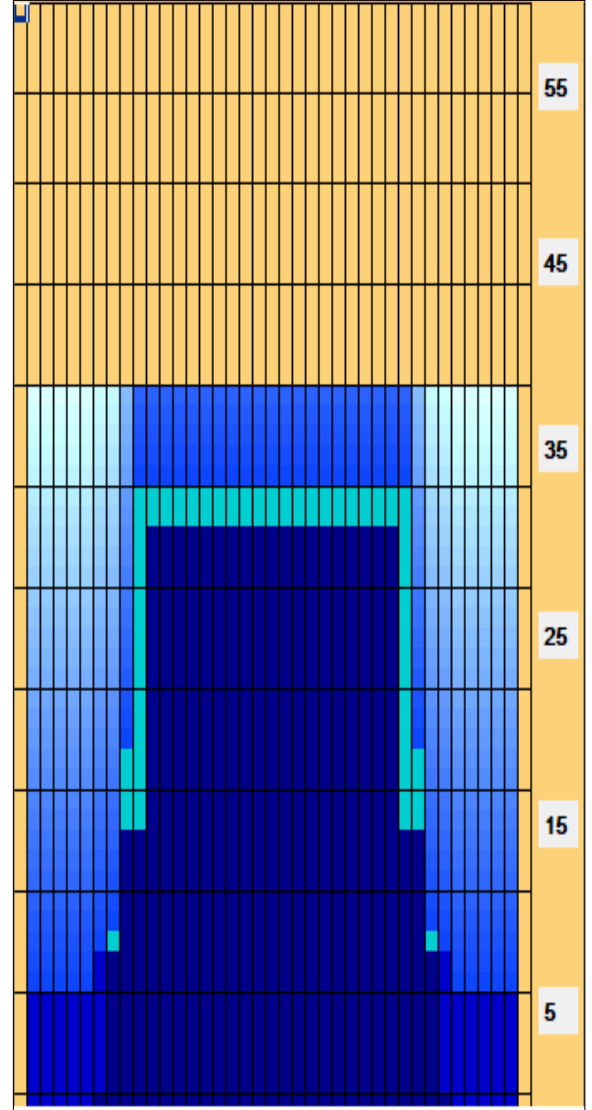
Navigation: Forward Reverse More

	Start	Stop	Loads	Speed	Crossed	Start	End	Feet	T.Oil
1	2L	2R	0	30	0	40.0	33.0	-7.0	0
2	11L	11R	4	26	76	33.0	18.3	-14.7	3040
3	9L	9R	2	22	46	18.3	12.1	-6.2	1840
4	7L	7R	1	18	27	12.1	9.6	-2.5	1080
5	2L	2R	1	18	37	9.6	7.1	-2.5	1480
6	2L	2R	1	14	37	7.1	5.2	-1.9	1480
7	2L	2R	0	14	0	5.2	0.0	-5.2	0

Navigation: Forward Reverse More

Conditioner:
Type In or Select One
TransferType:
Type In or Select One

- Forward
- Reverse
- Combined
- Buff



Item	3L-7L:18L-18R	8L-12L:18L-18R	13L-17L:18L-18R	18L-18R:17R-13R	18L-18R:12R-8R	18L-18R:7R-3R
Description	Outside Track:Middle	Middle Track:Middle	Inside Track:Middle	Middle: Inside Track	Middle:Middle Track	Middle:Outside Track
Track Zone Ratio	6.39	1.28	1	1	1.28	6.39

