

# 2024年9月10月レーンコンディション



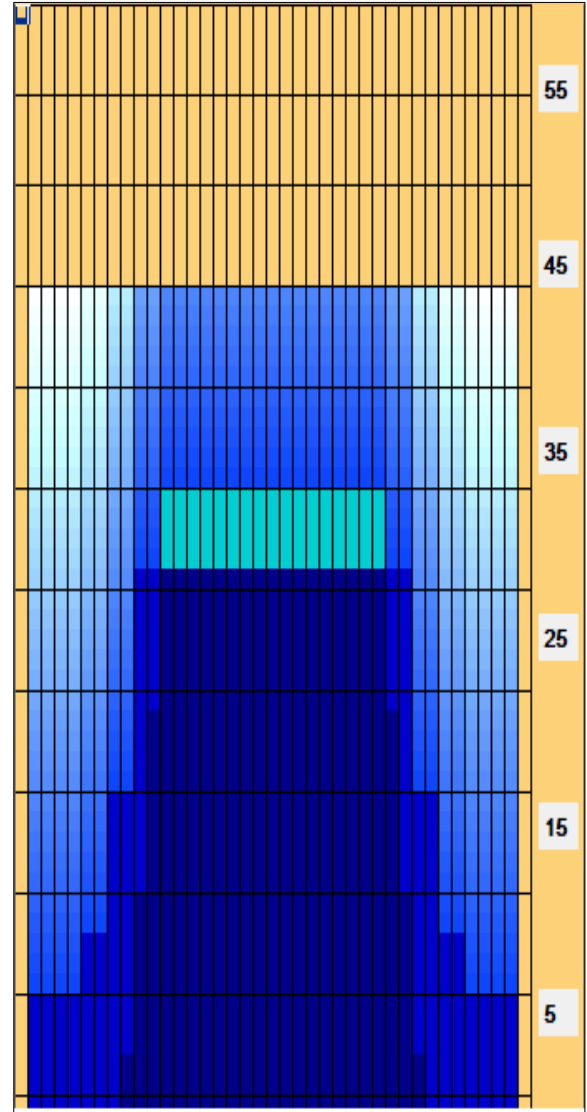
<b>Oil Pattern Distance:</b>	<b>45 Feet</b>	<b>Reverse Brush Drop:</b>	<b>43 Feet</b>	<b>Oil Per Board:</b>	<b>45 uL</b>
<b>Forward Oil Total:</b>	<b>13.59 mL</b>	<b>Reverse Oil Total:</b>	<b>9.72 mL</b>	<b>Volume Oil Total:</b>	<b>23.31 mL</b>
<b>Forward Boards Crossed:</b>	<b>302 Boards</b>	<b>Reverse Boards Crossed:</b>	<b>216 Boards</b>	<b>Total Boards Crossed:</b>	<b>518 Boards</b>

	Start	Stop	Loads	Speed	Crossed	Start	End	Feet	T.Oil
1	5L	5R	1	14	31	0.0	0.0	0.0	1395
2	7L	7R	2	14	54	0.0	3.9	3.9	2430
3	9L	9R	2	14	46	3.9	7.8	3.9	2070
4	10L	10R	3	18	63	7.8	15.4	7.6	2835
5	11L	11R	3	22	57	15.4	24.7	9.3	2565
6	12L	12R	3	26	51	24.7	35.7	11.0	2295
7	2L	2R	0	26	0	35.7	45.0	9.3	0

Conditioner: Type In or Select One  
TransferType: Type In or Select One

Forward  
Reverse  
Combined  
Buff

	Start	Stop	Loads	Speed	Crossed	Start	End	Feet	T.Oil
1	2L	2R	0	30	0	45.0	31.0	-14.0	0
2	10L	10R	3	26	63	31.0	20.0	-11.0	2835
3	8L	8R	2	26	50	20.0	12.7	-7.3	2250
4	6L	6R	1	22	29	12.7	9.6	-3.1	1305
5	2L	2R	2	18	74	9.6	4.5	-5.1	3330
6	2L	2R	0	14	0	4.5	0.0	-4.5	0



Item	3L-7L:18L-18R	8L-12L:18L-18R	13L-17L:18L-18R	18L-18R:17R-13R	18L-18R:12R-8R	18L-18R:7R-3R
Description	Outside Track:Middle	Middle Track:Middle	Inside Track:Middle	Middle: Inside Track	Middle:Middle Track	Middle:Outside Track
Track Zone Ratio	6.47	1.47	1	1	1.47	6.47

